



SNAICC

National Voice for our Children

Active Efforts: Strategies for ensuring the safety and wellbeing of Aboriginal and Torres Strait Islander children

Natalie Lewis, SNAICC – Director



ACKNOWLEDGEMENT OF COUNTRY



SNAICC

National Voice for our Children

Purpose of today's session

- Explore the concept of Active Efforts and unpack its meaning across all five elements of the Aboriginal and Torres Strait Islander Child Placement Principle.



SNAICC
National Voice for our Children

Background

- Aboriginal and Torres Strait Islander children are 11 times more likely to be removed from their families and placed in out-of-home care.
- 49 per cent are living with Aboriginal and Torres Strait Islander kin or carers (RoGS, 2019).



SNAICC
National Voice for our Children

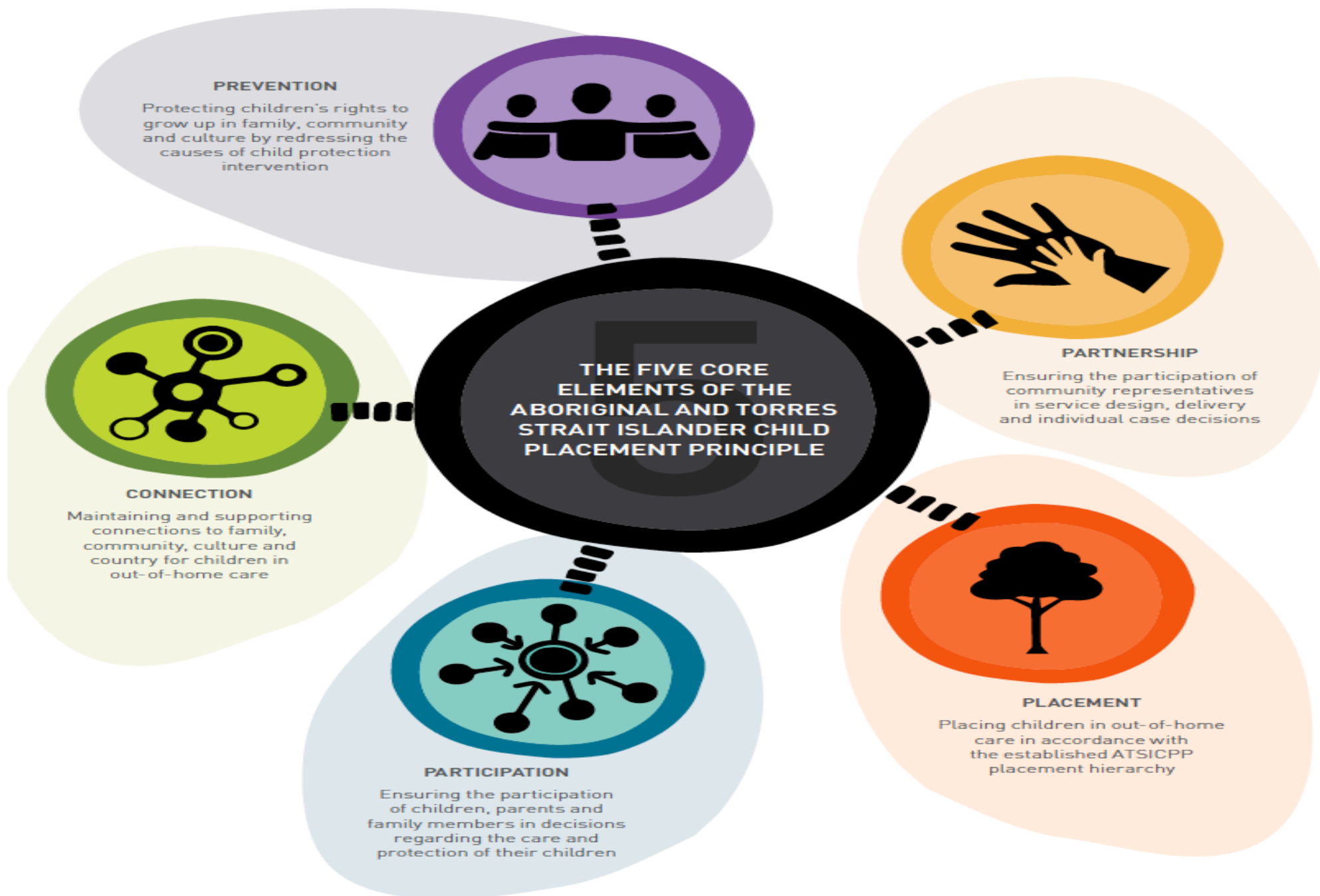


FIGURE 1 – The five core elements of the Aboriginal and Torres Strait Islander Child Placement Principle

What are Active Efforts?

- Active efforts are purposeful, thorough and timely efforts, supported by legislation and policy, that enable the safety and wellbeing of Aboriginal and Torres Strait Islander children.



SNAICC

National Voice for our Children

Active Efforts in the United States

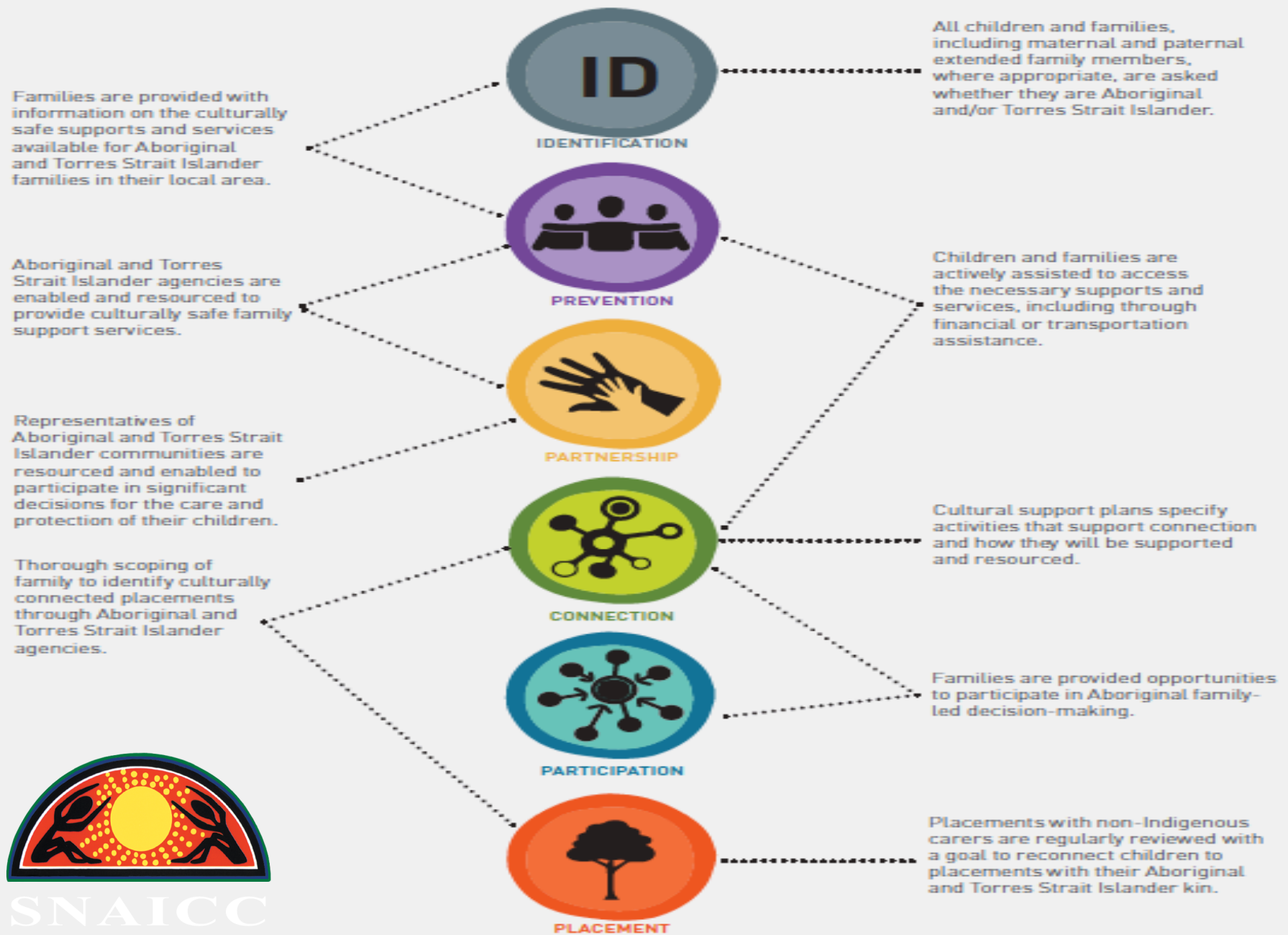
- The National Indian Child Welfare Association (NICWA) notes Active Efforts may include:
 - Conducting a strengths-based assessment that takes into account a child's cultural needs;
 - Enabling child and family participation in case planning;
 - The provision of early intervention supports to families prior to removing a child;
 - Providing reunification supports to families.



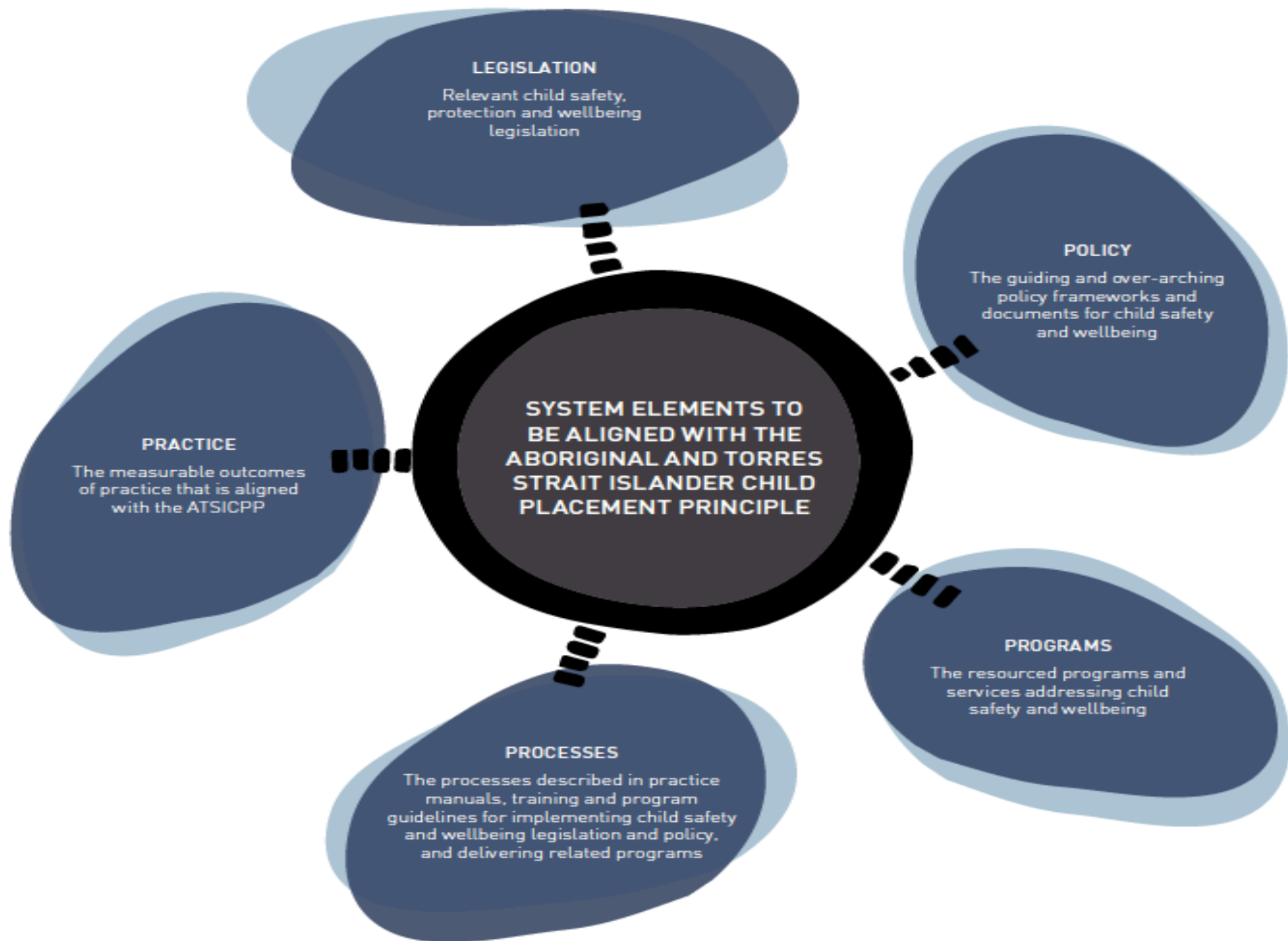
SNAICC

National Voice for our Children

EXAMPLES OF ACTIVE EFFORTS



SNAICC
National Voice for our Children



Activity: Identifying examples of Active Efforts for implementation of the Aboriginal and Torres Strait Islander Child Placement Principle

Questions to guide your discussion:

- What are examples of active efforts that support implementation of this element of the Aboriginal and Torres Strait Islander Child Placement Principle?
- What are the changes across legislation, policy, programs, processes, and practices that are required to realise implementation of Active Efforts?
- What are the barriers to realising full implementation of the Aboriginal and Torres Strait Islander Child Placement Principle?



SNAICC

National Voice for our Children