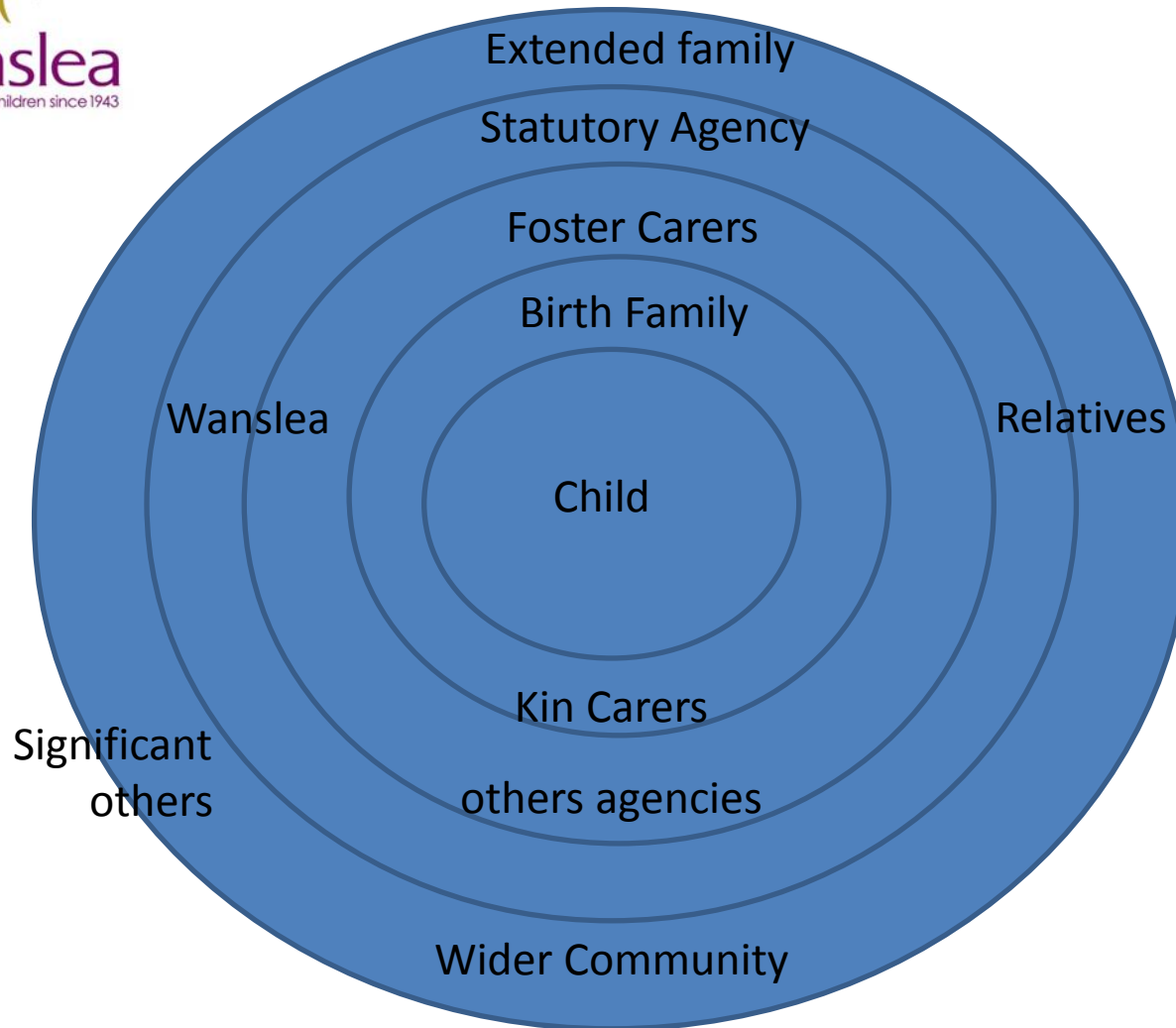




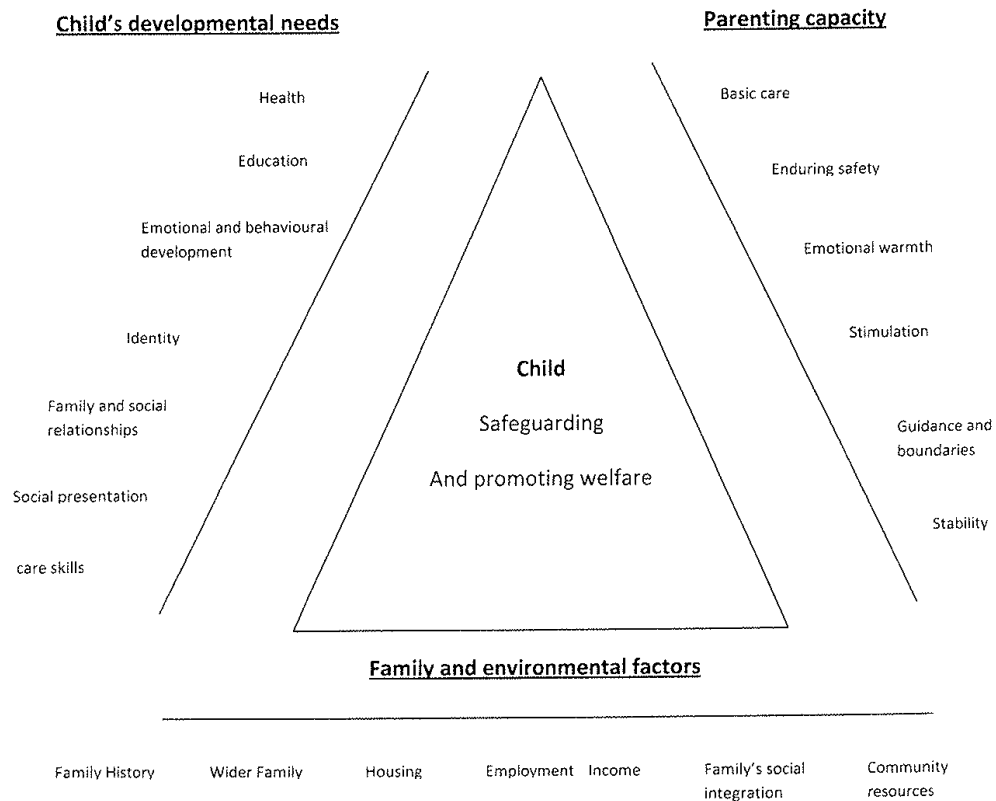


# THE CHILD IN SIGHT, IN MIND AND RIGHT IN THE CENTRE

A CHILD-CENTRED, FAMILY- INCLUSIVE  
REUNIFICATION PROGRAM



# REUNIFICATION: AN ECOLOGICAL APPROACH



Source: "The Framework for the assessment of Children in Need & other Families" (Dept. of Health ISBN 0113223102.)

# A FRAMEWORK FOR ASSESSMENT

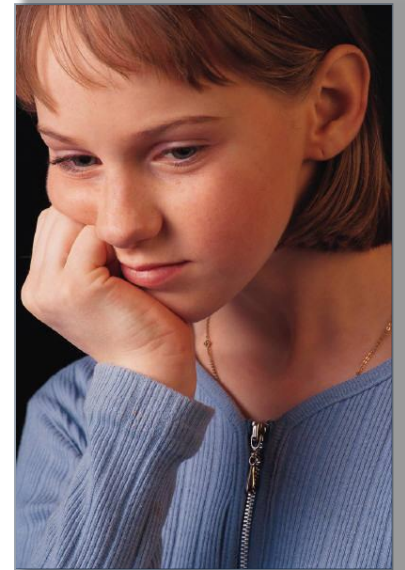
# WHO IS THE CLIENT

- ❖ Where Did She Go?
- ❖ My Rights, My Needs, My Goals

# CHILD-CENTRED WORK

## WHAT DOES IT MEAN?

- ❖ Beginning with the Children
- ❖ Listening to their Stories
- ❖ Understanding the Impact of their Experiences
- ❖ Understanding the Impact of the Work
- ❖ A Child's Time-Frame



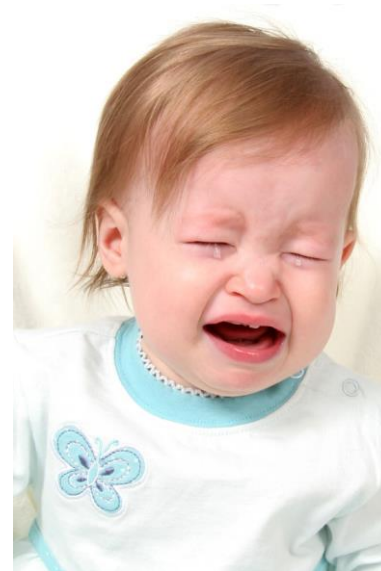
# PRACTICE PRINCIPLES FOR REUNIFICATION

- ❖ The child's rights and Needs
- ❖ Parallel Planning
- ❖ Safety of the child
- ❖ Capacity of Families
- ❖ A Process NOT an Event
- ❖ Dynamic Assessment
- ❖ Partnership and Collaboration
- ❖ Participation of the child
- ❖ Evidence based practice



# THE SPECIAL NEEDS OF BABIES

- ❖ Attachment with whom?
- ❖ When a lot of contact can be too much contact
- ❖ I don't understand



- ❖ But I can remember



# GETTING TO KNOW YOU!

## PLAY OR WORK?

- ❖ Lets Hang Out!
- ❖ It Takes Time
- ❖ My Place or Yours
- ❖ That's Not What I Wanted



# PAYING THE PRICE

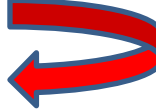

❖ I Told you My Story!

❖ Can you Cope?

❖ Look in the Mirror



# REACHING FOR RESILIENCE

- ❖ 'Noble Resilience'
- ❖ Vulnerability and Adversity  
The Parallel Process   
  
Vicarious Traumatization and  
compassion fatigue

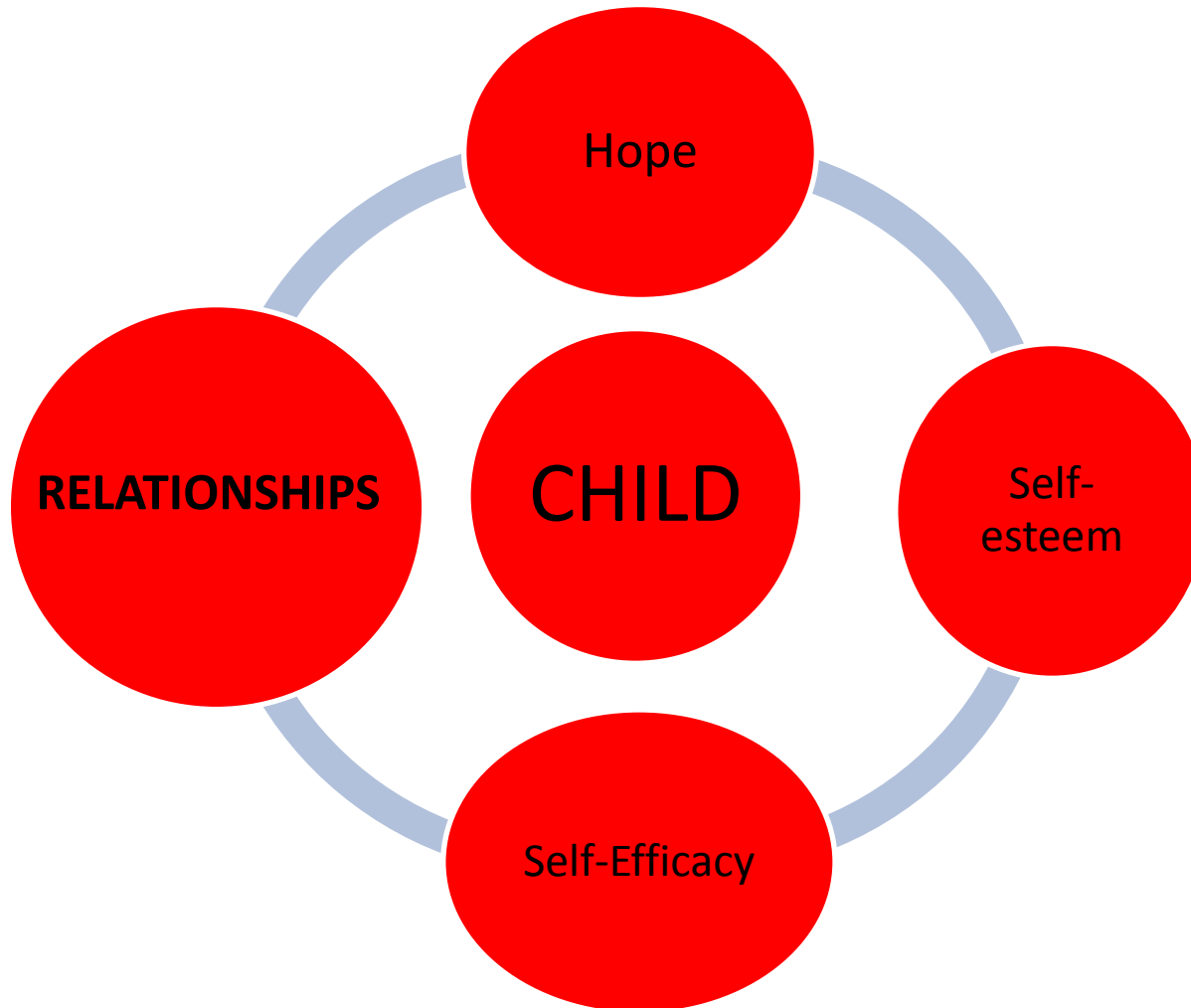
# THE SAFETY NET



- ❖ Organisational responsibility
- ❖ Emotional resources through a sense of self-efficacy
- ❖ Strategies and a store of strength

# FINDING HOPE

# MAINTAINING HOPE



# CONTACT DETAILS



JENNY TERRY  
CLINICAL MANAGER  
WANSLEA FAMILY SERVICES  
PERTH W.A.

TEL: (08) 9245 2441

Email: [jterry@wanslea.asn.au](mailto:jterry@wanslea.asn.au)