



ARACY

Australian Research Alliance for Children & Youth  
Collaboration • Evidence • Prevention



# The Common Approach for Communities Working with Families

Anglicare Tasmania and ARACY

Katrina Bester and Amarylise Bessey

The Communities for Children Initiative is funded by the Australian Government Department of Social Services



ARACY

Australian Research Alliance for Children & Youth  
Collaboration \* Evidence \* Prevention



# What is The Common Approach?

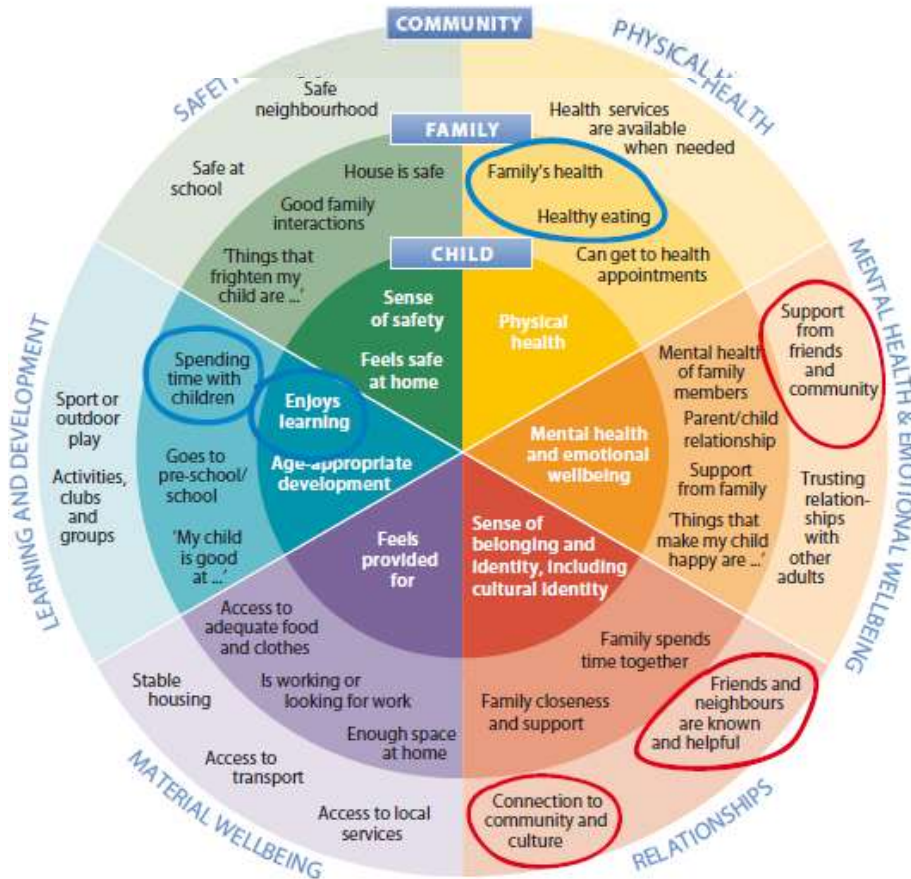
(Common Approach to Assessment, Referral and Support)

*The Common Approach is a **framework** to help professionals in first contact with kids to have a **conversation** with a family or young person when they have a **gut feeling** that something is wrong.*



ARACY

Australian Research Alliance for Children & Youth  
Collaboration \* Evidence \* Prevention



Holistic, strengths based, child centred discussion framework

Conversation and plan in partnership with family

A map, a prompt, a guide (not a script or a formula)

Supported by questionnaires and prompts



ARACY

Australian Research Alliance for Children & Youth  
Collaboration \* Evidence \* Prevention



# Case Study





ARACY

Australian Research Alliance for Children & Youth  
Collaboration \* Evidence \* Prevention



# The Common Approach and Anglicare Tasmania

- What was the “problem”
- Why could The Common Approach be the answer?



ARACY

Australian Research Alliance for Children & Youth

Collaboration \* Evidence \* Prevention





ARACY

Australian Research Alliance for Children & Youth  
Collaboration \* Evidence \* Prevention



# The Rules of Engagement

- The process of engaging potential partners
- (steps taken, pitfalls, learnings, timing)



ARACY

Australian Research Alliance for Children & Youth  
Collaboration \* Evidence \* Prevention



# The Implementation Process

## ABOVE THE LINE FOCUS

Initiative's Theory of Change Infused with a Systemic Lens

*System Norms, Components, Connections, Regulations, Power Operations,*

*Interdependencies*

Simple Rules



Systemic  
Action  
Learning



Small Wins

Teams

## BELOW THE LINE FOCUS

Building a Climate for Effective Implementation

*Readiness, Capacity, Diffusion, Sustainability*





ARACY

Australian Research Alliance for Children & Youth  
Collaboration \* Evidence \* Prevention



# What Implementation Looks Like

- Planning and mapping
- Support of Steering Group
- Strong Champions
- Training
- Ongoing coaching



ARACY

Australian Research Alliance for Children & Youth  
Collaboration \* Evidence \* Prevention



# Early Findings

- Using it as a “map in my head” (Aboriginal Community Links, schools, other NGOS)
- Education Department now has a tool for approaching structured conversations
- Child Protection very interested, particularly for teens
- Broadening questions, even for very experienced practitioners
- Appropriate referral has improved



ARACY

Australian Research Alliance for Children & Youth  
Collaboration \* Evidence \* Prevention



# Thank you

**Katrina Bester**

Anglicare Tasmania

[k.bester@anglicare-tas.org.au](mailto:k.bester@anglicare-tas.org.au)

**Amarylise Bessey**

ARACY

[amarylise.bessey@aracy.org.au](mailto:amarylise.bessey@aracy.org.au)