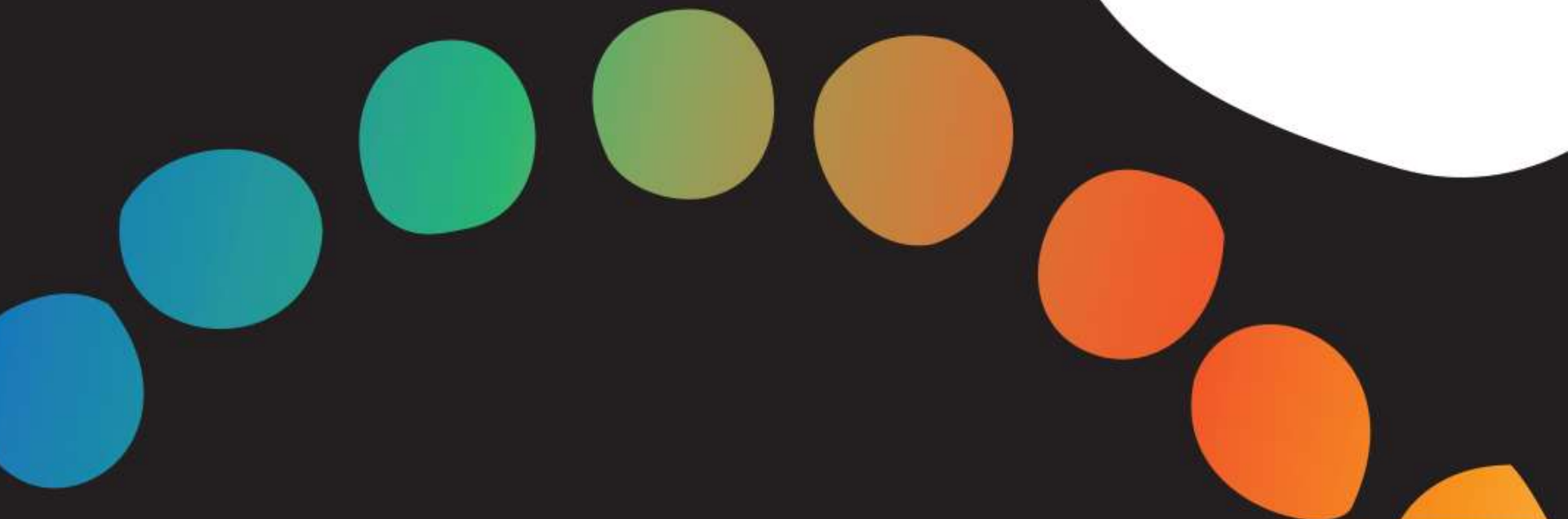


Redefining Aboriginal Community Control
and shifting the power back into Aboriginal
and Torres Strait Islander communities,
families and children

CHILD AWARE APPROACHES CONFERENCE, BRISBANE, MAY 15-16, 2017



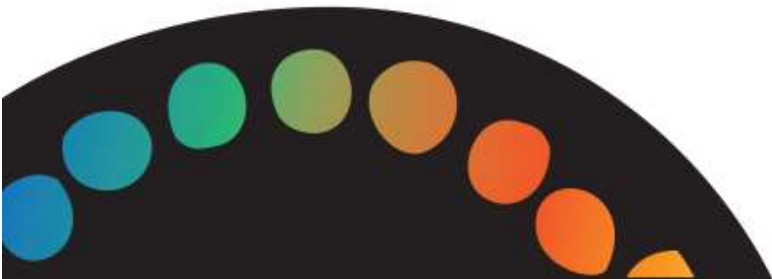
ChildProtectionPeak



Strengthening the capacity for change towards self-determination

Circa. Dec 1981

L-R: Heather Joyce Currie (Nanna), Cheryl Ann Currie (Mum) and Nadia Therese Currie (front and centre)





“...the right to self-determination is the right of a people to determine its own destiny.”



“Without self-determination it is not possible for Indigenous Australians to fully overcome the legacy of colonisation and dispossession.”



Current Definition and Standards

National Aboriginal Community Controlled Health Organisation (NACCHO) Definition

The term Aboriginal Community Control has its genesis in Aboriginal peoples' right to self-determination.

An Aboriginal Community Controlled Health Service is:

- An incorporated Aboriginal organisation
- Initiated by a local Aboriginal community
- Based in a local Aboriginal community
- Governed by an Aboriginal body which is elected by the local Aboriginal community
- Delivering a holistic and culturally appropriate health service to the Community which controls it.

By definition, organisations controlled by Government to any extent are excluded.



**Queensland Aboriginal and
Torres Strait Islander
Community Controlled Project**

Intent of Queensland Aboriginal and Torres Strait Islander Community Control and Self-Determination



(Kalwun, 2016)

***“HAVING CONTROL OF ISSUES THAT DIRECTLY AFFECT THEIR COMMUNITY,
INDEPENDENT OF GOVERNMENT***

SELF DETERMINE AND SELF-MANAGE

CULTURAL PROTOCOLS, COMMUNITY BELIEFS

***GOVERNMENT MUST TRUST ABORIGINAL AND TORRES STRAIT ISLANDER
PEOPLES TO BE SELF-DETERMINANT AND SUSTAINABLE***

***ALLOW ABORIGINAL AND TORRES STRAIT ISLANDER PEOPLE TO CONTROL
GOVERNANCE AND COMMUNITY AFFAIRS.”***

QATSICPP Aboriginal and Torres Strait Islander Community Controlled Definition



Community Controlled means:

- (a) the **EMPOWERING** of a community through the adoption of appropriate organisational structures which **ENABLE ALL ABORIGINAL AND TORRES STRAIT ISLANDER PEOPLE** in the local community the opportunity to be **REPRESENTED** as members and to be involved in the **DECISION MAKING** process and, therefore, the right to **PARTICIPATE** and **CONTRIBUTE** to the **GOALS, STRUCTURE** and **OPERATIONS** of the local community's services; and
- (b) **RESPONSIBILITY** and **ACCOUNTABILITY** to the community having regard to local **CULTURAL** perceptions and imperatives.

Aboriginal and Torres Strait Islander Community Controlled Service

Or

Aboriginal and Torres Strait Islander Child Protection Agency means:

An incorporated Aboriginal and/or Torres Strait Islander organisation, board of management **ELECTED** by a **LOCAL** Aboriginal and Torres Strait Islander community membership and which:

- (a) **ACTIVELY** provides **CULTURALLY APPROPRIATE** child protection, statutory services, alternative care, family support, residential care, kinship and foster care and related services to the community which it services; and
- (b) has rules preventing the distribution of property to individual members of the organisation.

Strengthening the capacity for change towards self-determination

