



# Being Child Aware In South Western Sydney Local Health District (SWSLHD)

***Presenters:***

***Lisa McCue- Director Child Protection SWSLHD***

***Regina Nagy- Project Officer, SWSLHD Drug Health Services***



# Summary



1. Background
2. The project
3. The awareness campaign
4. The pilot



# Background

- Est Population 922,000
- 12.2% of the NSW Population
- 29 South Western Sydney suburbs are part of the NSW 10% most disadvantaged
- 240,000 are children 0-17years
- 9000 children involved in Risk of Significant Harm reports in 2015
- 2,176 children living in out of home care
- Over ½ of all adolescent presentations to ED relate to self-harm and suicidal thoughts
- SWSLHD has approx 12,000 staff
- Over 50 inpatient, outpatient and community based services
- Approx 70-80% of services are adult focused



# Broadening the scope of services

## Current State

Think. Feel. Do

## Preferred State

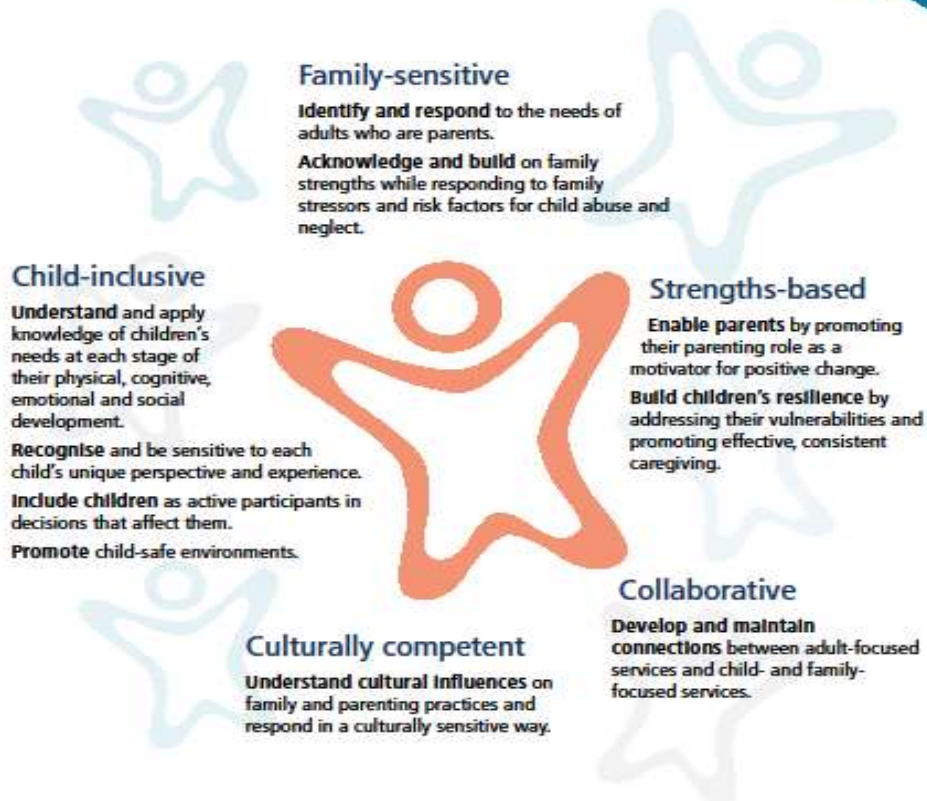
- Siloed services and systems
- Focused on individuals and individual problems
- Lack of a shared understanding about causes of child wellbeing and child protection.
- Staff- child wellbeing and protection is not their role
- Asking child protection questions will interfere with the direct care with patient (parent)
- Variation in staff confidence about asking child and family focused questions
- Staff aren't making appropriate referrals to the right services

- Child protection framework that builds systems around the wellbeing of children and the needs of families
- Build capacity in services to address the adult problems that relate to negative outcomes for children
- Strengthen collaboration between adult focused and child focused services.
- Holistic approaches that considers patients as parents
- Confident staff and understand that they don't need to be an expert to ask about children
- All staff know where to get support



# The principles of Child Aware Approaches

Child Aware principles guide community-led, innovative and practical, grassroots actions to keep children safe and well.



# Project Plan Phases

1. Case for change
- 2. Key Messages and Communication Strategy**
- 3. Develop Service Audit tool & Staff Child and Family Sensitive Survey**
4. Skills development and maintenance
- 5. Drug Health Services Pilot**
6. Development and Implementation of Child Aware Framework
7. Evaluation



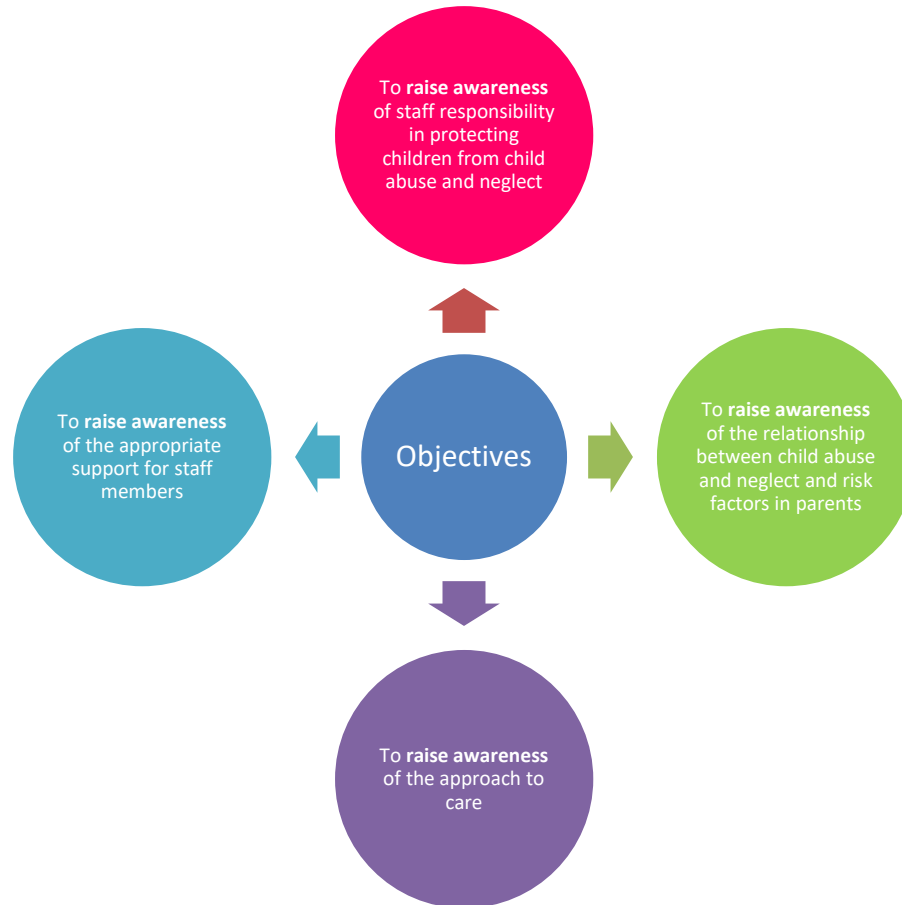
# Campaign purpose



To raise awareness of child aware approach, initiatives and practical tools to help staff understand the impacts of child abuse and neglect and their responsibility.



# Campaign Objectives





# 1. Objective and Key messages

To raise awareness of staff responsibility in protecting children from child abuse and neglect

**Always consider child abuse and neglect**  
It is our responsibility.

**Is this child safe?**  
We are all responsible to consider child abuse and neglect.

**Supporting parents and carers can protect kids**  
We are all responsible to Identify, Consult and Respond to vulnerable children and families.



## 2. Object and key message

To raise awareness of the relationship between child abuse and neglect and risk factors in parents

**Parent/carer wellbeing impacts the safety and wellbeing of their kids.**

Parent/carer risk factors are strongly associated with negative outcomes for kids.

**Pause and reflect, what are you not seeing?**

**Support parents and carers to better support their children**

**Ask parents what support and assistance they need to be better care for their kids**

If an adult patient is vulnerable, so are their children.

**A parent/carers health issues, can impact on children's safety and wellbeing**

Ask parents what support and assistance they need to be better care for their kids.



### 3. Objective and key message

To raise  
awareness  
of the  
approach to  
care

**Your patient/client could be a parent or carer**

Ask them about the kids in their care.

**It only takes a moment to ask about kids**

Asking about kids in the care of patients/clients can make a difference.

**If your adult patient is vulnerable, so are their children**

Asking about kids in the care of patients/clients can make a difference.



## 4. Objective and key message

To raise awareness of the appropriate support for staff members

### Concerns? What now?

Help is available on the Child Protection Strategy Unit intranet page on the SWSLHD Intranet.

**Go to SWSLHD Child Protection Strategy Unit Intranet page**, for all child wellbeing and child protection resources.

### Need to speak with someone?

Share your concerns with our child protection experts by calling XXXX



# IT ONLY TAKES A MOMENT TO ASK ABOUT KIDS

Asking about kids in the care of patients/clients can make a difference.



## Concerns? What now?

Help is available on the Child Protection Strategy Unit intranet page on the SWSLHD Intranet.

# The Pilot – Drug Health Services



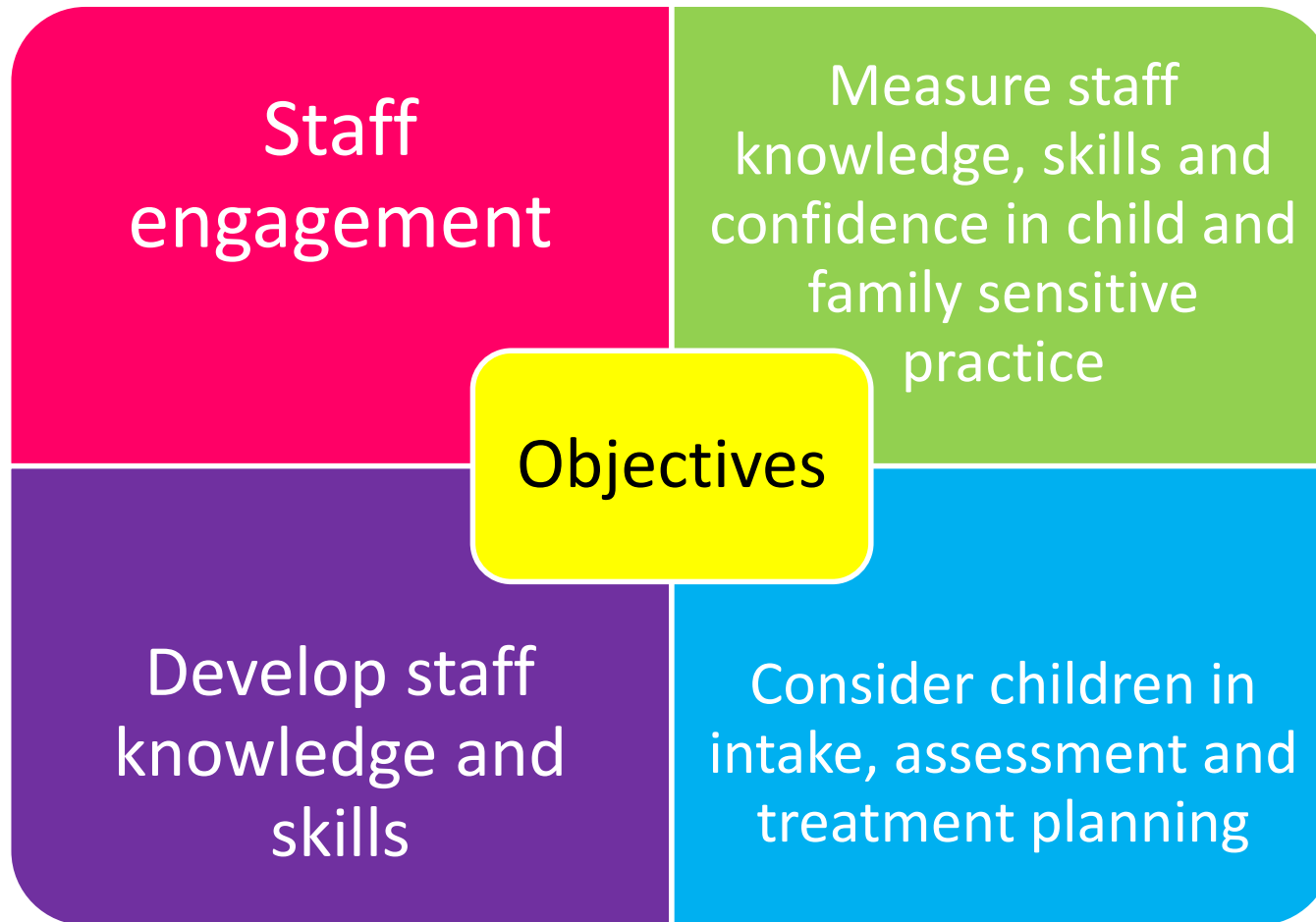
Health  
South Western Sydney  
Local Health District



“Child health is a predictor of adult health”  
(Australian Research Alliance for Children and Youth  
(ARACY) 2015)



# The pilot - objectives



# The audit tool – managers results



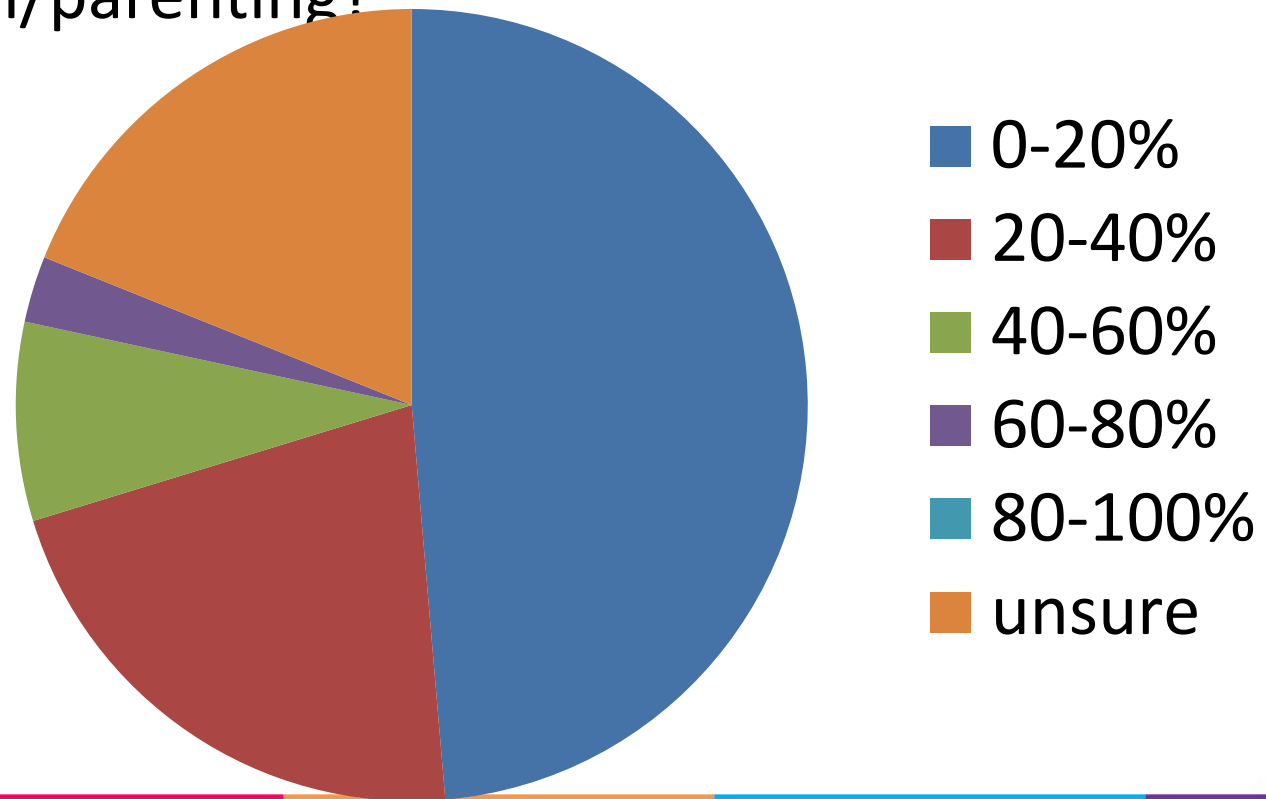
Assessment Tool Questions	Team 1	Team 2	Team 3	Team 4	Team 5	Team 6	Team 7
Intake							
1. Clients responsible for the care of children is known?	2	3	4	1	5	1	1
2. Caregiving needs of parents considered during intake?	2	3	3	1	4	1	1
3. Clients (childhood or adult trauma history) is known?	2	3	4	1	5	1	1





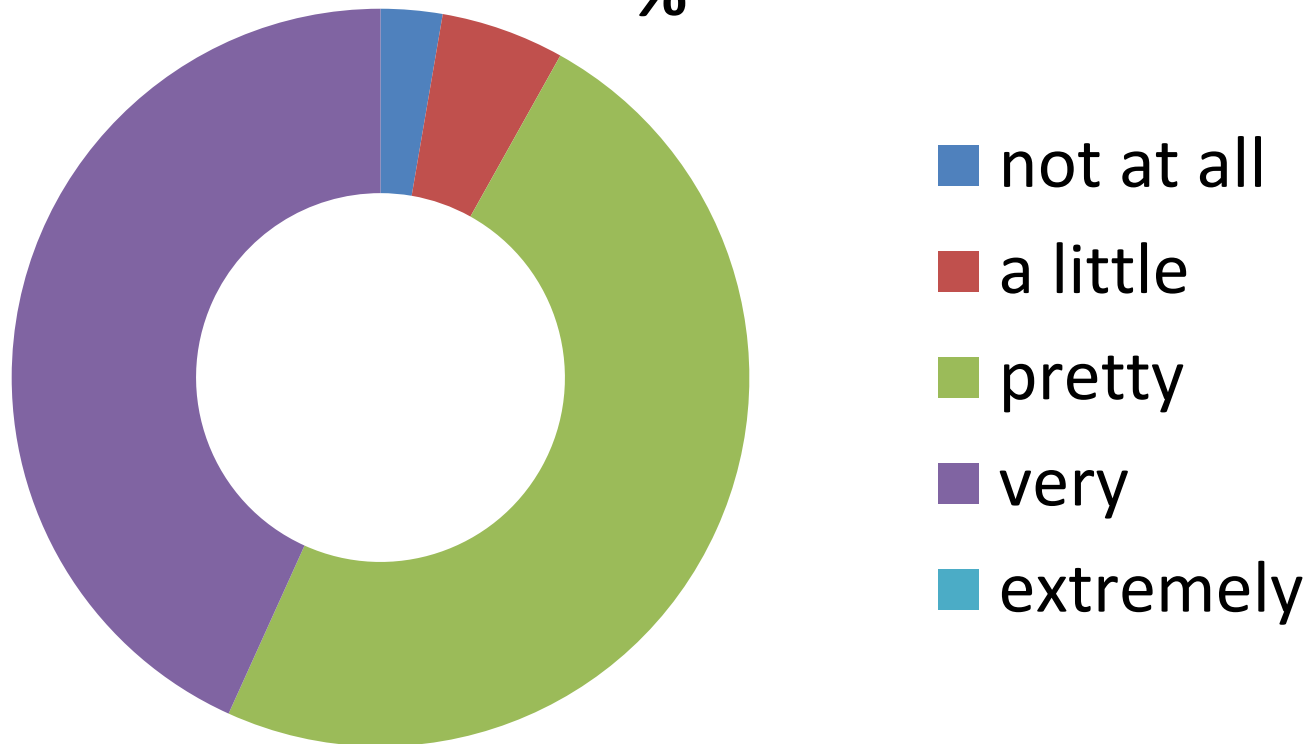
# Staff survey results

- What percentage of your caseload would you estimate you have concerns regarding child protection/parenting?



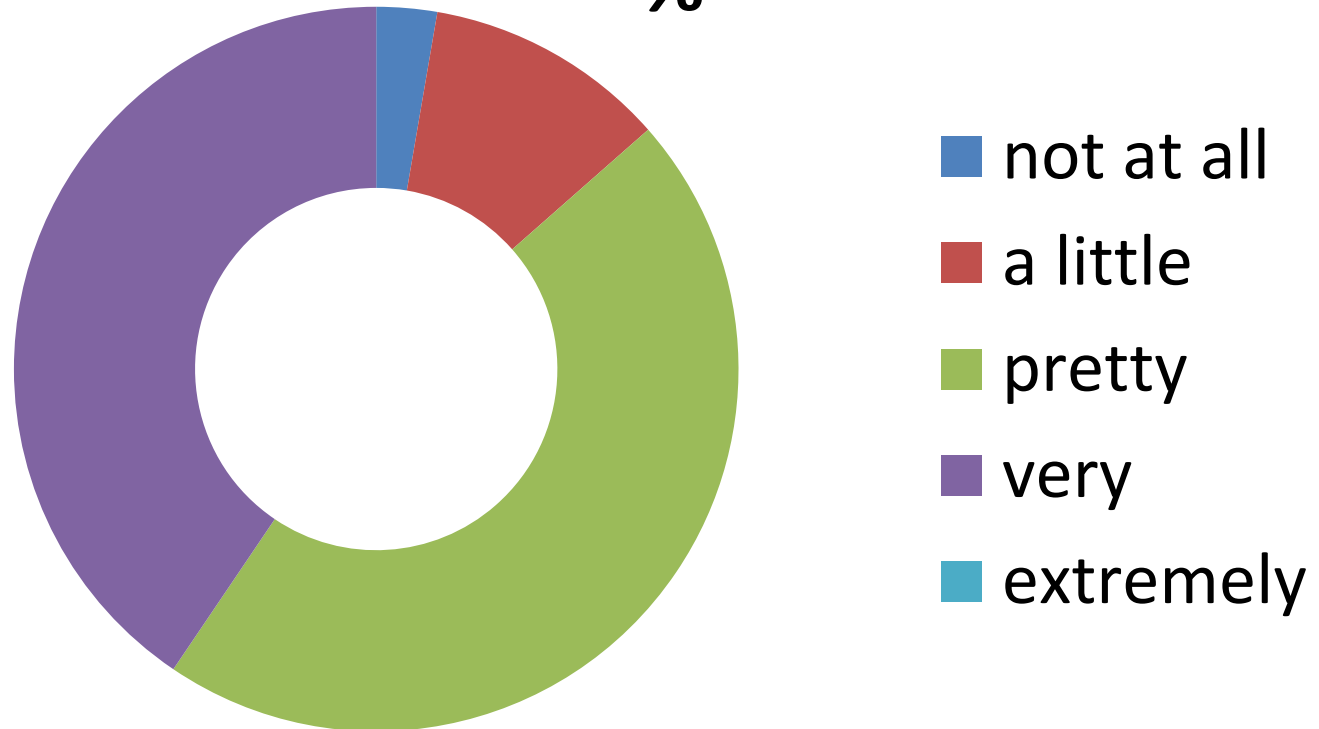
# Staff survey results

- How confident do you feel in working with clients who have child protection/parenting issues;  
%



# Staff survey results

- How confident do you feel providing interventions to clients around their child protection/parenting issues;



# Staff survey results

- What area would you like to receive further support?
  - New legislation, policies and requirements of health professionals working with clients where child protection may be a factor
  - Client engagement around parenting
  - Child protection/ parenting issues/ parenting capacity



# The next steps

## For the Drug Health Services pilot

- Develop an action plan from audit tool and staff survey results
- Some actions;
  - Child and family sensitive training
  - How to make our service environments child friendly
  - Conduct file audits
  - Review and update position descriptions
  - Update procedures and assessment tools to include child and family sensitive practices



# The next steps

## For SWSLHD project

- Development of a child and family sensitive training strategy for targeted services.
- Finalise media and communication options for the awareness campaign
- Evaluation of the Drug Health Services pilot and adaption for further streams, e.g. mental health, emergency departments
- Recommendations provided to the CE for roll out



# References

- Australian Institute of Family Studies, (2014). The good practice guide to Child Aware Approaches: Keeping children safe and well. CFCA No. 21. May 2014
- Commissioner for Children and Young People WA, (2016). Child Safe Organisations WA: Self-assessment and review tool, Commissioner for Children and Young People WA, Perth
- Cousins, C. (2004). 'But the parent is trying': the dilemmas workers face when children are at risk from parental substance use
- NSW Family and Community Services, Community Services, FACS statistics- Improving the lives of children and young people. <https://www.facs.nsw.gov.au/facs-statistics/objective-1>
- Harris, Nadine. (2015) How childhood trauma affects health across a lifetime. TED talk
- Scott, D. (2009). "Think child, think family": How adult specialist services can support children at risk of abuse and neglect. *Family Matters*, 81, 38-42.
- Scott, D. (2015). Children in Australia: Harms and hopes. *Family Matters*, 96, 14-22.
- South Western Sydney Local Health District, (2016). Health Improvement Plan for Children, Young People and Families.

